



## Installation Instructions Model 89982-89988

| Model NO. | Length | Input Watts |
|-----------|--------|-------------|
| 89982     | 6"     | 4W          |
| 89983     | 12"    | 8W          |
| 89984     | 18"    | 12W         |
| 89985     | 24"    | 16W         |
| 89986     | 30"    | 20W         |
| 89988     | 42"    | 28W         |

**WARNING:** These fixtures present a possible shock or fire hazard if improperly installed. Fixtures should be installed in accordance with the below instructions, local electrical codes or NEC compliance. To avoid electrical shock, disconnect power prior to installation. It is recommended that these fixtures be installed by a licensed electrician.

### Direct Wire Installation

1. Open Lid (B) of fixture with Philips Screw Driver. (Drawing #1). Pull Tab (I) to easily lift Lid(B), Then discard Tab(I)
2. Attach Romex Connector to the Lid (B). Insert Romex Connector (C) through the Fixture (A) and tighten with Nut (E). (Drawing #2)
3. Strip outer Romex sheath (H) back minimum of 5" and pull solid core wire through romex connector until sheath is into the connector and tighten screws (D). Strip 3/8" of jacket from solid core wire and insert into quick connectors (G). (Black to Black, White to White and Green to Ground).

Tug in all the wires into the compartment. Reattach wiring compartment lid (B) to the fixture with a Philips Screw Driver. (Drawing #3).

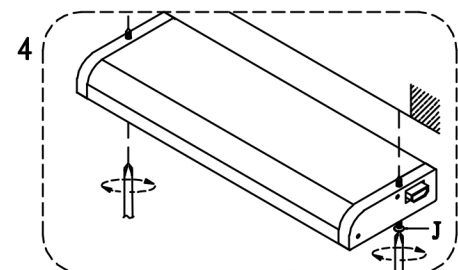
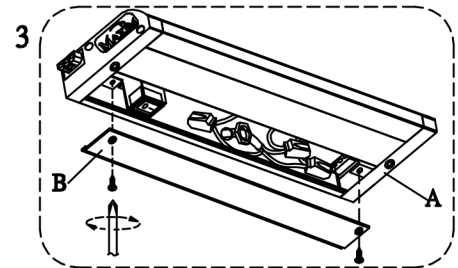
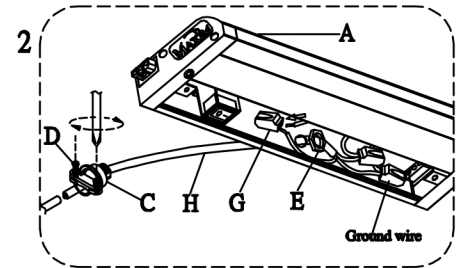
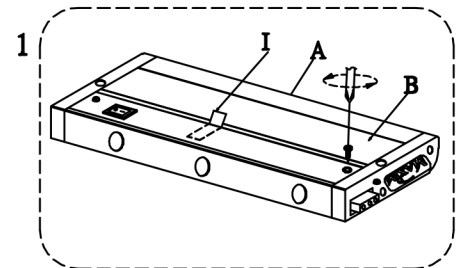
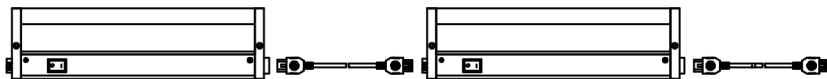
1. Position fixture onto cabinet and run pre-installed screws (J) into bottom of cabinet surface.

### Direct Wire Box Installation

1. Remove cover from optional direct wire box 87885/E87885.
2. Pull romex wire through wire gate in back of box.
3. Position box and screw to bottom of cabinet.
4. Cut Romex so that there is a 6" lead and strip outer sheath.
5. Strip 3/8" of jacket from solid core wire and insert into quick stab connectors (Black to Black, White to White, and Green for Ground)
6. Replace cover on box and tighten.
7. Determine location of 1st fixture and use correct length optional connecting cord from box to end of 1st fixture.

### Plug In Installation

1. Position fixture onto cabinet and run pre-installed screws into bottom of cabinet surface.
2. Plug into fixture optional power cord 87880/E87880 and then into wall outlet.



### Dimming

This LED fixture is designed to dim with a standard Triac forward phase dimmer. Wattage should not exceed 200 watts of product for a 600 watt dimmer. For optimal performance use ELV dimmer.